



Measurement Approaches to Partnership Success (MAPS) is an affiliated project of the Detroit Urban Research Center (Detroit URC) and is supported by a federal grant from the National Institute of Nursing Research (NINR). Federal Identification Number: R01NR016123

Using a Delphi Process to Develop Measures of Success among Longstanding CBPR Partnerships

Shoou-Yih Daniel Lee, PhD; Laurie Lachance PhD, MPH; Barbara A. Israel, DrPH, MPH; Graciela B. Mentz PhD; Megan Jensen, MPH; Chris M. Coombe PhD; MPH, Michael Muhammad, PhD; Eliza Wilson-Powers, BFA; Zachary Rowe, BBA; **Angela G. Reyes, MPH**; and Barbara L. Brush, PhD, ANP-BC, FAAN

AMERICAN PUBLIC HEALTH ASSOCIATION ANNUAL MEETING, - PHILADELPHIA, PA, - WEDNESDAY, NOVEMBER 6, 2019

Presenter Disclosure

- Co-Presenters: Shoou-Yih Daniel Lee & Angela G. Reyes
- The following personal financial relationships with commercial interests relevant to this presentation existed in the past twelve (12) months.
- **NO RELATIONSHIPS TO DISCLOSE**

What is the Detroit URC & MAPS?

The Measurement Approaches to Partnership Success (MAPS) is a project of the Detroit Community-Academic Urban Research Center (Detroit URC) and builds upon its work using a CBPR approach throughout all stages of the project.



M | PUBLIC HEALTH



Detroiters Working for Environmental Justice
Fostering Clean, Healthy and Safe Communities



M | SOCIAL WORK

M | NURSING



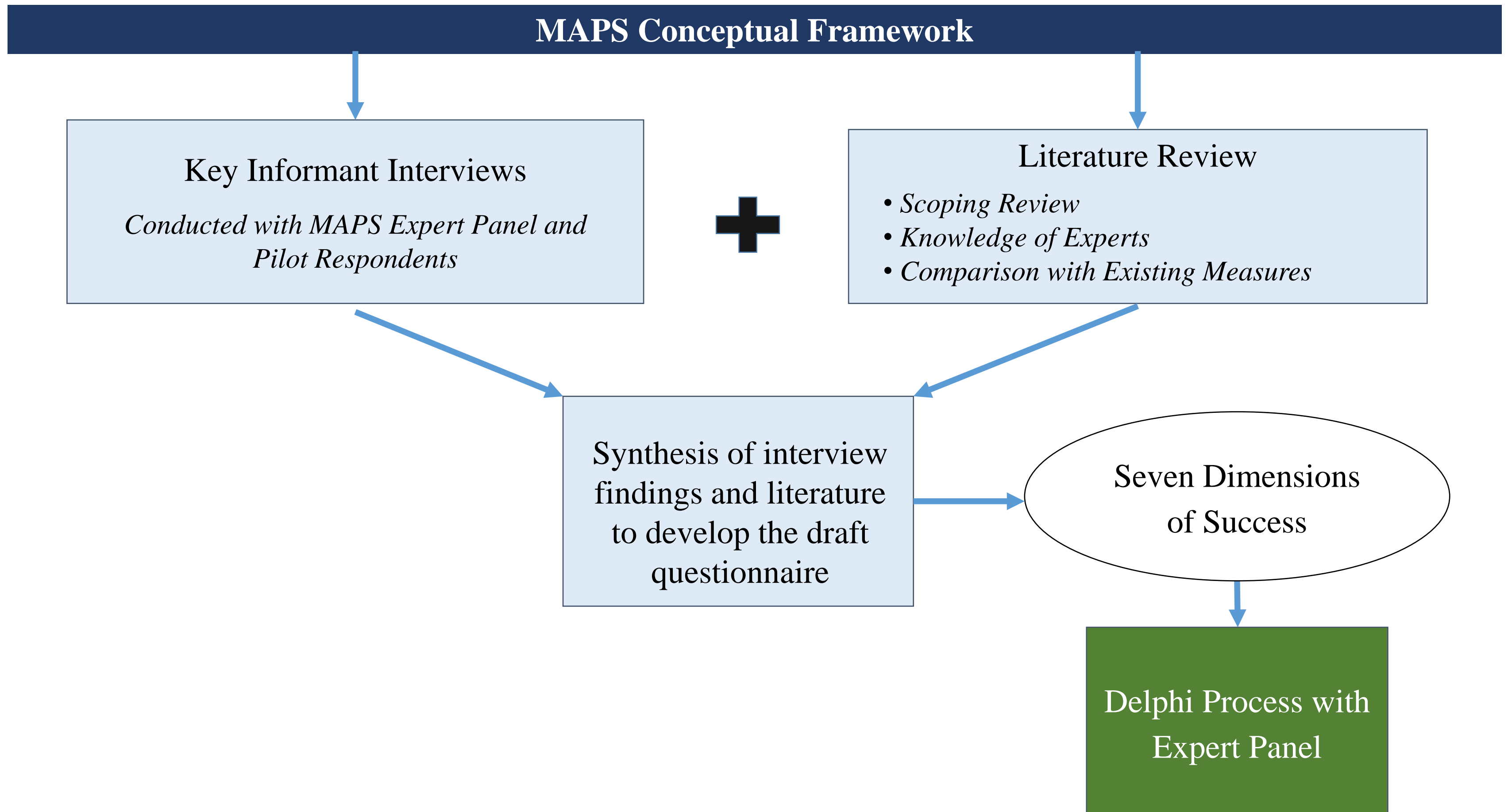
EASTSIDE
COMMUNITY
NETWORK

CHASS
Community Health And Social Services Center

Specific Aims for the MAPS Study

- 1** Clearly define CBPR partnership success and develop a tool (MAPS) to assess partnership success and its intermediate and long-term contributing factors in longstanding CBPR partnerships.
- 2** Test the psychometric qualities of the MAPS tool in a sample of longstanding CBPR partnerships existing 6 years and longer.
- 3** Develop mechanisms to feed back and apply partnership evaluation findings, and widely disseminate the MAPS tool and feedback mechanism in a readily accessible and usable format.

Methodology to Develop MAPS Questionnaire



Identified Dimensions of Success

1. Equity in the Partnership
2. Partnership Synergy
3. Reciprocity
4. Competence Enhancement
5. Sustainability
6. Realization of Benefits Over Time
7. Achievement of Intermediate and Long-Term Partnership Goals/Outcomes



MAPS Delphi Process



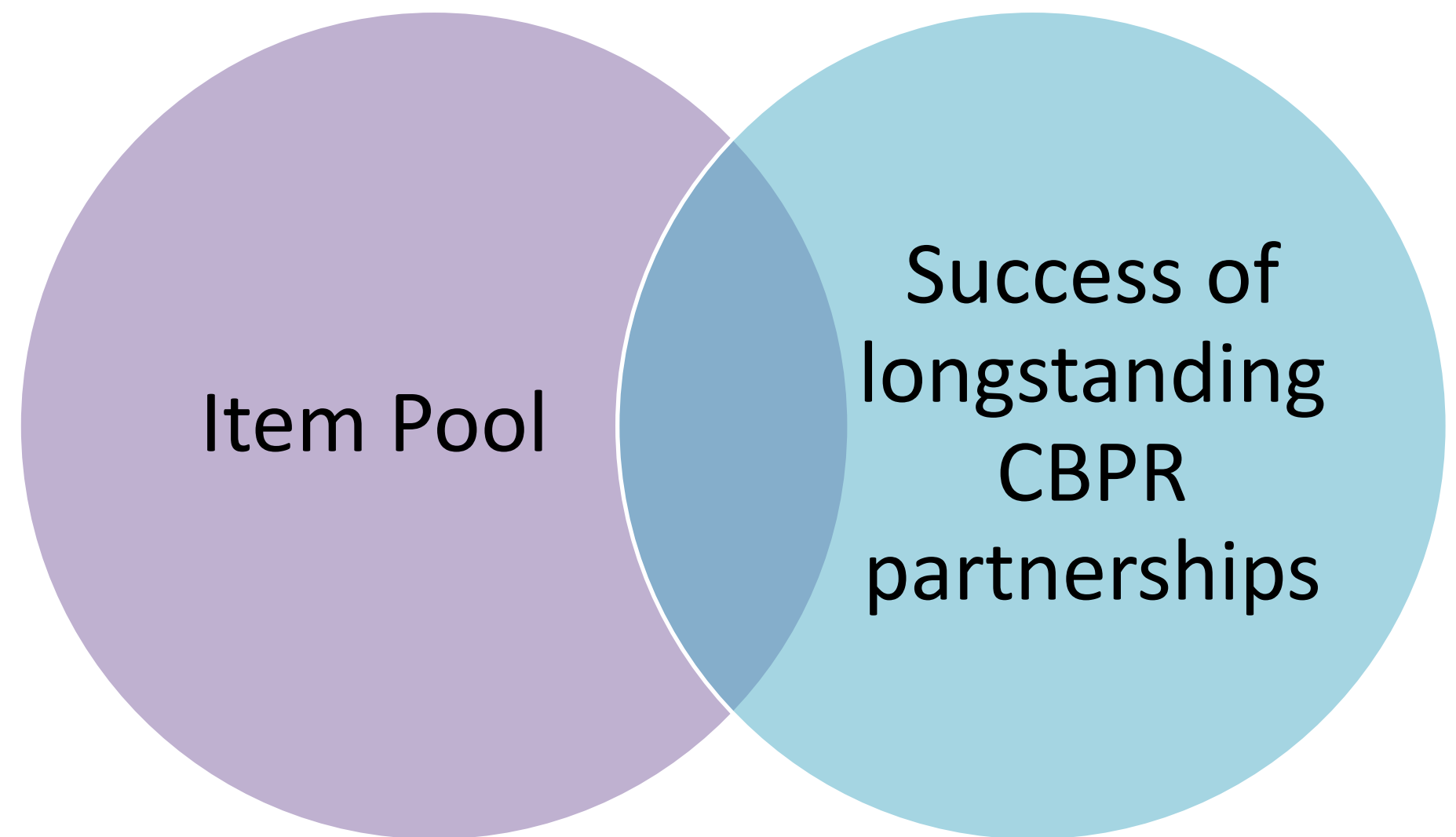
What to achieve in the MAPS Delphi process?

Face Validity



“Looks good to me”

Content Validity

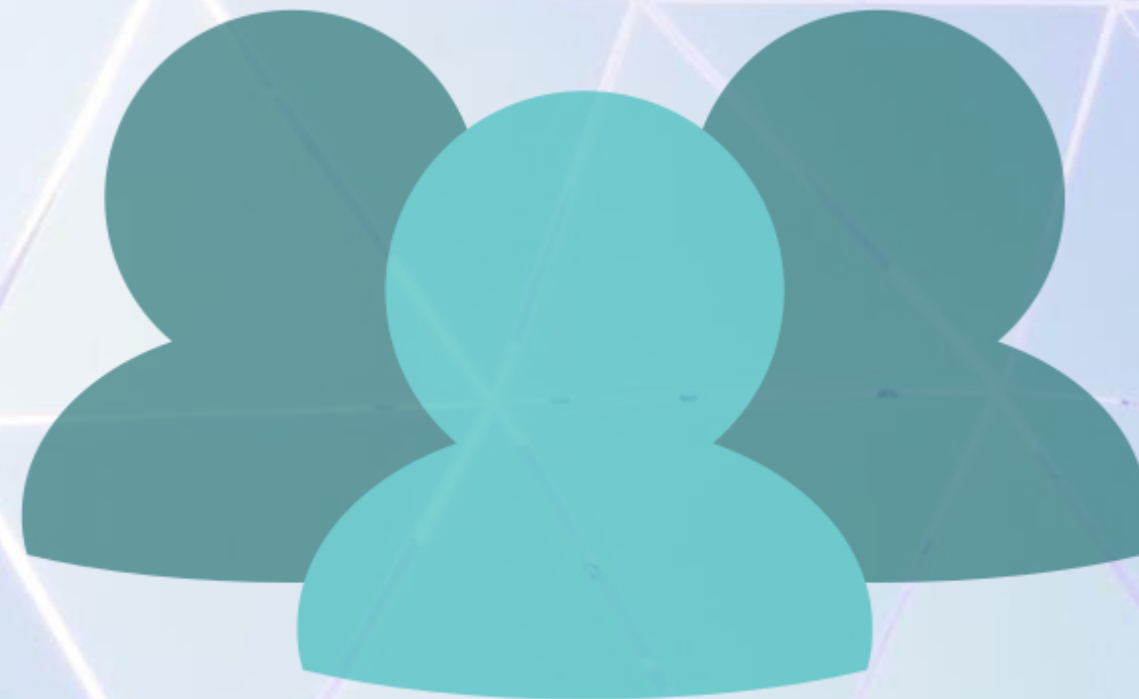


Item Pool

Success of
longstanding
CBPR
partnerships

What is a standard Delphi process?

A structured, successive communication process to collate expert judgements on a complex problem, for which precise scientific laws have not been established



The process ideally reduces the range of expert opinions and converges toward a "correct" answer.

MAPS Community Expert Panelists: *Key Informants*



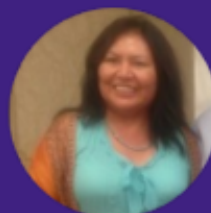
Alex Allen
Executive Director
Chandler Park Conservancy
Detroit, Michigan



Linda Burhansstipanov
Founder/President & Grants Director
Native American Cancer Research Corporation
Denver, Colorado



Ella Greene-Moton
Administrator
CBOP Community Ethics Review Board
Flint, Michigan



Marita Jones
Executive Director
Healthy Native Communities Partnership, Inc.
Shiprock, New Mexico



Angela Reyes
Executive Director
Detroit Hispanic Development Corporation
Detroit, Michigan



Al Richmond
Executive Director
Community-Campus Partnerships for Health
Raleigh, North Carolina



Zachary Rowe
Executive Director
Friends of Parkside
Detroit, Michigan



Peggy Shepard
Executive Director
WEACT for Environmental Justice
New York, New York

MAPS Academic Expert Panelists: *Key Informants*



Elizabeth (Beth) Baker

Professor, College for Public Health & Social Justice
St. Louis University
St. Louis, Missouri



Cleopatra (Cleo) Caldwell

Professor, School of Public Health
University of Michigan
Ann Arbor, Michigan



Bonnie Duran

Associate Professor, School of Social Work
University of Washington
Seattle, Washington



Eugenia (Geni) Eng

Professor, School of Public Health
University of North Carolina at Chapel Hill
Chapel Hill, North Carolina



Meredith (Merry) Minkler

Professor Emerita, School of Public Health
University of California, Berkeley
Berkeley, California



Amy Schulz

Professor, School of Public Health
University of Michigan
Ann Arbor, Michigan



Melissa Valerio

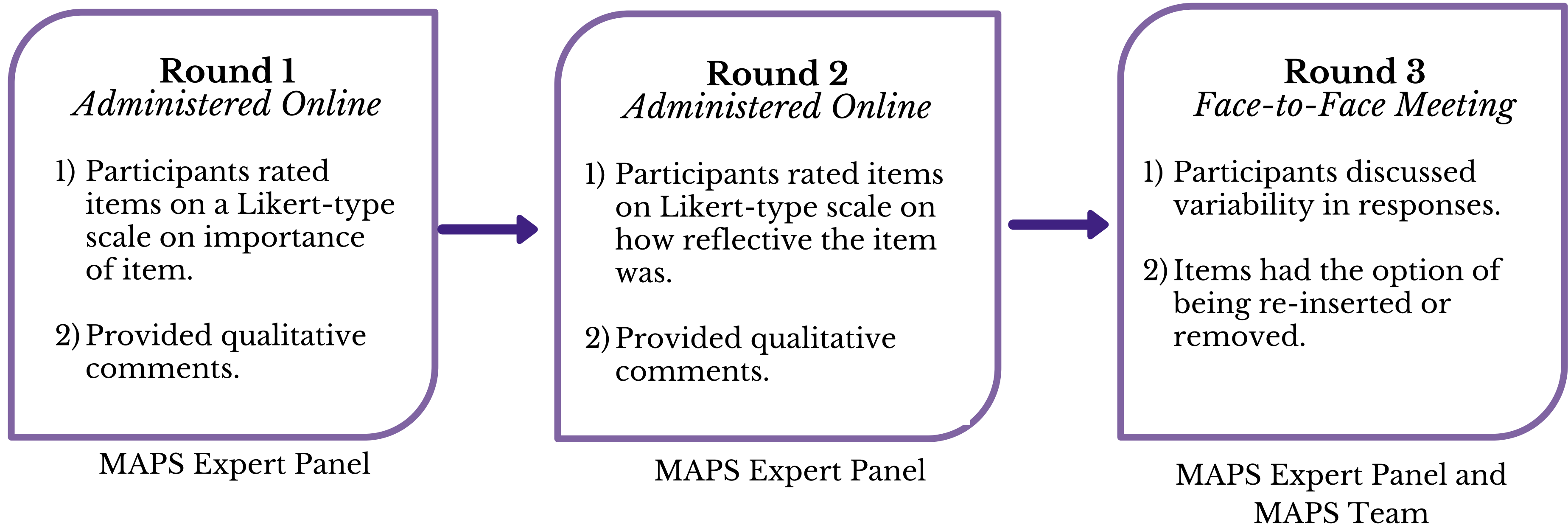
Associate Professor, UT Health Science Center
UT Health School of Public Health San Antonio
Regional Campus
San Antonio, Texas



Nina Wallerstein

Professor of Public Health
University of New Mexico School of Medicine
Albuquerque, New Mexico

The MAPS Delphi Process (3 Rounds)





MAPS Delphi Process Results



Delphi Process Round 1 & Round 2 Results

Round 1: 96 Items *Administered Online*

- 79 Items Retained (75% or more of the Expert Panel ranked item as “very important” or “important”)
- 33 Items re-worded based on qualitative comments.
- Reduced Likert-type scale from 5 points to 3 points
- Changed anchors from “Important” to “Reflective”

MAPS Expert Panel
April 2018



Round 2: 79 Items *Administered Online*

- 59 Items Retained (75% or more of the Expert Panel ranked item as “Yes, Reflective.”)
- 20 Items flagged for variability in responses
- 10 items flagged for qualitative comments
- 4 Items re-worded/modified

MAPS Expert Panel
May 2018

Example of AGREEMENT on Questionnaire Items Responses

Partners gain knowledge and skills that are transferrable outside the partnership (e.g., policy advocacy, program development and implementation, meeting facilitation, leadership).

-From section on Competence Enhancement

	Yes, Reflective	Somewhat Reflective	Not Reflective
All Frequency(Percent)	16 (100%)	0 (0%)	0 (0%)
C: Frequency (Percent)	8 (100%)	0 (0%)	0 (0%)
A: Frequency (Percent)	8 (100%)	0 (0%)	0 (0%)

"Good and important question!" – Academic Panelist

"This is critically important and supports sustainability beyond the current funded work."
– Community Panelist



Example of VARIABILITY on Questionnaire Items Responses

Costs of being involved in the partnership decrease over time.

-From section on Realization of Benefits Over Time

	Yes, Reflective	Somewhat Reflective	Not Reflective
All Frequency(Percent)	4 (25%)	7 (43.75%)	5 (31.25%)
C: Frequency (Percent)	1 (12.5%)	3 (37.5%)	4 (50.0%)
A: Frequency (Percent)	3 (37.5%)	4 (50.0%)	1 (12.5%)



"...It strikes me that as partnerships continue if partners continue to invest and perhaps increase their commitment to, and engagement with, the partnership over time...costs might also increase accordingly..." – Academic Panelist

"In some cases, it increases as tasks multiply over time." – Community Panelist

Example of QUALITATIVE COMMENTS flagged for discussion:

“New relationships are developed beyond the initial partnership”

-From Round 2 results in the section identified as “Sustainability”

All Frequency(Percent)	Yes, Reflective 12 (75%)	Somewhat Reflective 3 (18.75%)	Not Reflective 1 (6.25%)
C: Frequency (Percent)	6 (75%)	2 (25%)	0 (0%)
A: Frequency (Percent)	6 (75%)	1 (12.5%)	1 (12.5%)



“Not needed” – Academic Panelist

“Critically important and needed” – Community Panelist



**Round 3: Delphi Process
Face-to-Face Meeting
Ann Arbor, MI
June 2018**

**Delphi Round #3: 79 Items:
Face-to-Face Meeting
June 19th-20th, 2018; Ann Arbor, Michigan**

- Begin in-person Delphi with 79 items
 - No items deleted from Round #2
 - Research team modified/re-worded 4 items
- Items flagged for discussion with Expert Panel:
 - Due to variability in responses: 20 items
 - Due to qualitative comments: 10 items

Expert Panel Face-to-Face Engagement

Issues of equity in longstanding CBPR partnerships:

“Equitable relationships are not possible between communities and academics – I would start there and say that I don’t think it makes sense to ask about equitable relationships.” – Community Expert

“I think partnerships can be equitable and it wouldn't necessarily refer to the institution....It’s not about academic 1000% and community 10%, it is about whatever you are distributing. It takes a lot of work and change since it is not where we started. Equity is a balance of whatever you are distributing.”

– Community Expert



MAPS Delphi Process Round 3 Results: Expert Panel & MAPS Research Team – June 2018

Questionnaire changes included:

- Relocating items to different sections of the survey that were more suited to what those items were measuring.
- Re-wording based on Expert Panelist suggestions.
- Incorporating new items to enhance content validity.

83 items advanced to cognitive interviews.

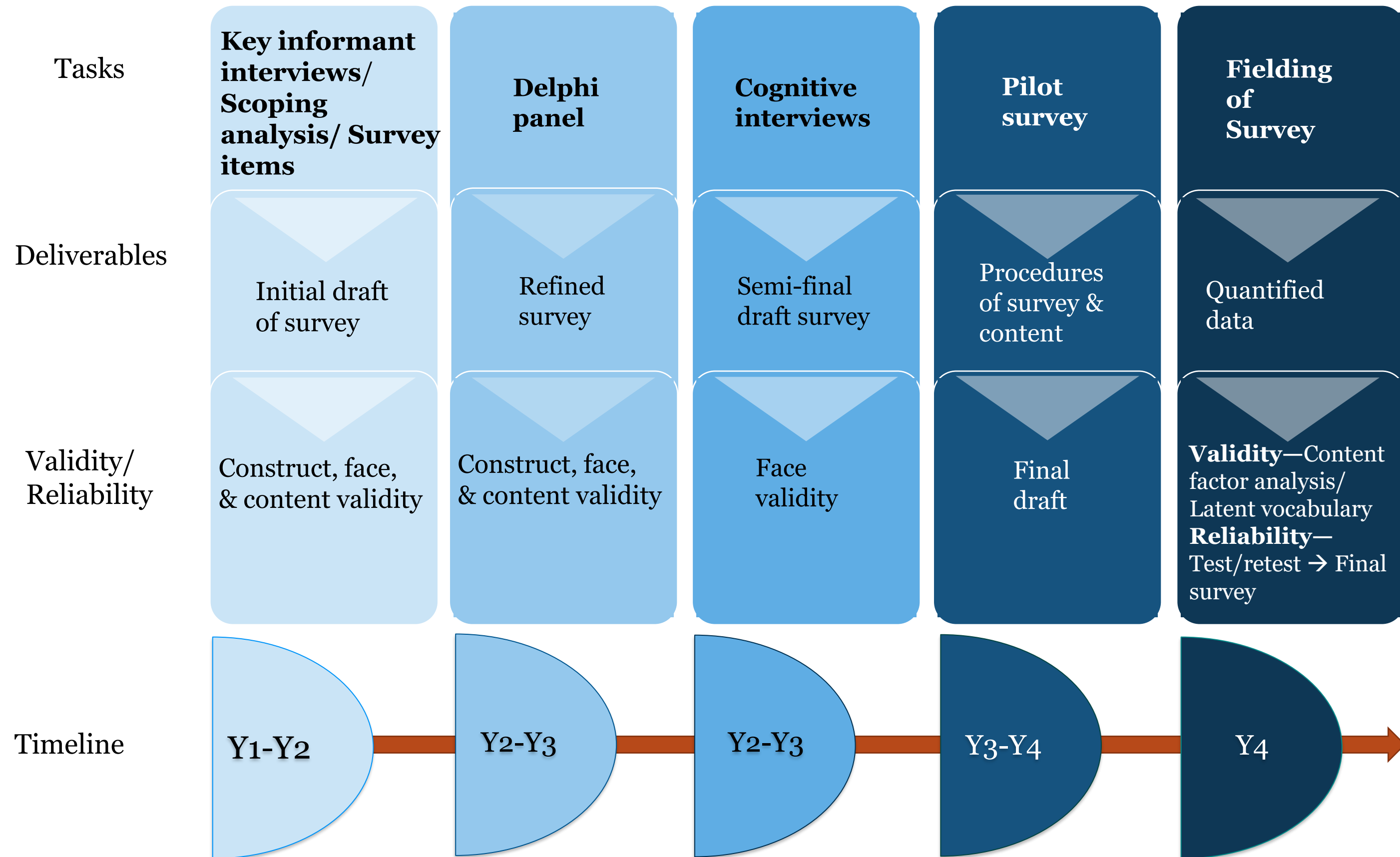




MAPS Study Post Delphi Process



 MAPS - Psychometric Data Analysis Plan



MAPS Delphi Process Methodological Framework



Strengths

- CBPR approach using both community and academic experts
- Face-to-face meeting to culminate the Delphi rounds
- Qualitative and quantitative responses to items

Challenges

- Facilitation can be challenging
- Strong, differing opinions
- Necessity of including research team member who is a skilled facilitator

Additional Lessons

- Selection of Delphi panelists is critical.
- Online rankings was efficient in eliminating redundant and irrelevant items.
- Face-to-Face allows discussion of variability in responses among experts.

Acknowledgements

The research team wishes to gratefully acknowledge the MAPS Expert Panel for their contributions to the conceptualization and implementation of this project: Alex Allen, Elizabeth Baker, Linda Burhansstipanov, Cleopatra Caldwell, Bonnie Duran, Eugenia Eng, Ella Greene-Moton, Marita Jones, Meredith Minkler, Angela Reyes, Al Richmond, Zachary Rowe, Amy Schulz, Peggy Shepard, Melissa Valerio, and Nina Wallerstein.

Additional thanks to Prachi Bhardwaj for her assistance in developing this presentation.

To learn more about the Measurement Approaches to Partnership Success (MAPS) project, please contact MAPS Project Manager, Megan Jensen.

Megan Jensen, MPH
E: mlaver@umich.edu
T: +1 (734) 764-6029



MAPS Expert Panel & Research Team
June 2018
Ann Arbor, MI